



COMPANY BROCHURE 2024

IKA Industrie- und
Kraftfahrzeugausrüstung GmbH

Humboldtstraße 8
D-53639 Königswinter
www.ika-germany.de
sales@ika-germany.de
+49 (0) 2244 / 91842-0

Spare Parts Specialist since 1906



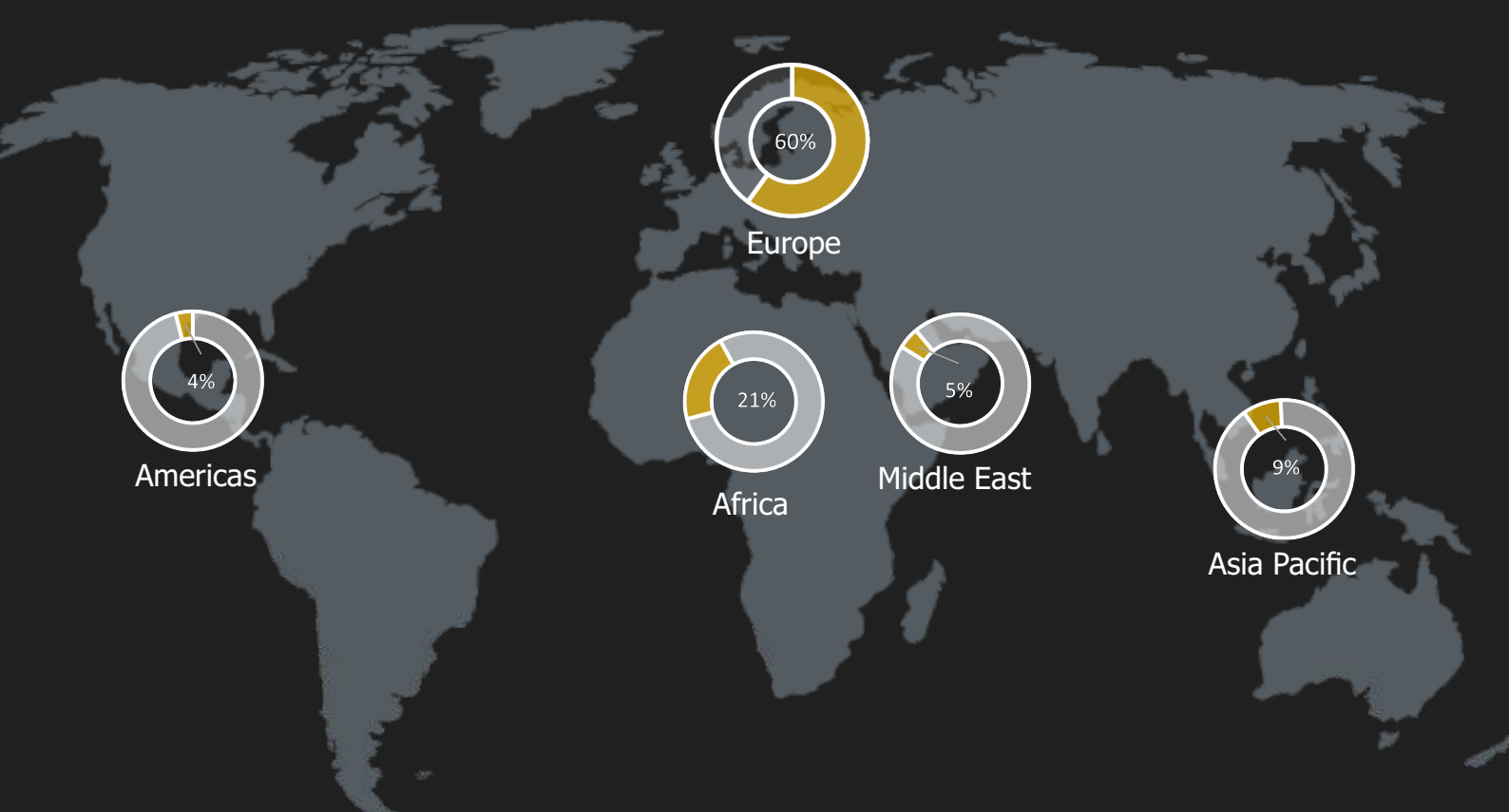


At IKA Germany, partnership is not a set-phrase, but a commitment for generations. As OEM carbon brushes producer for starters and alternators, GE BE has always been recognized for quality and got established as the brand of choice for the rebuild industry globally.

Subsequently, this GE BE commitment to excellence has been the benchmark during our portfolio expansions and acquisitions. Living up to the expectations of our partners in 70+ countries is the driving force to continually improve our service levels.

As a family business, we are committed to this heritage and value the responsibility of cooperative relationships with our partners.

Today we continue our dynamic growth as systems provider for sensors and engine management, whilst treasuring our legacy and foundation.

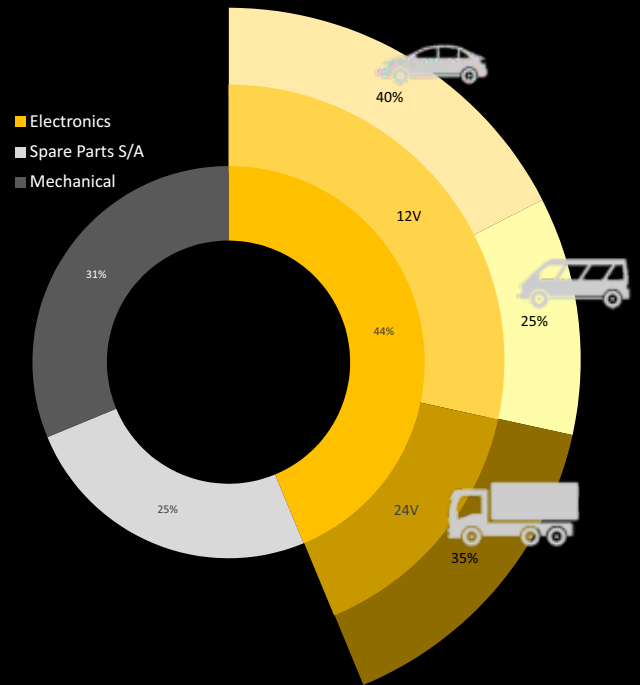


OUR VALUE COMMITMENT

BENCHMARK FOR QUALITY & SERVICE

LONG-TERM PARTNERSHIP

OPEN COMMUNICATION



The development experience and project scopes ranges from OEM/OES top tier industry volumes to small series exclusivity.

GEBE-products are manufactured according to the latest technical and ecological standards in automated production lines.

Our long-standing partnerships span from family-owned medium sized companies to market leaders across industries, providing us with continuous input to learn, challenge and improve ourselves.

CORE RANGE / COMPLEMENTARY RANGE

~ 6.300 part numbers on TecDoc

Exhaust system

NOx Sensors
EGR Valves/Modules
Pressure converter
Exhaust Gas Temperature Sensors
Lambda Sensors
AdBlue Modules
Exhaust Pressure Sensors

Engine/Gearbox

Idle Control Valves
Mass Air Sensors
Engine Oil Level Sensors
Camshaft Sensors
Crankshaft Sensors
Intake Manifold Pressure Sensors
Control Unit, automatic transmission
RPM-Sensor, automatic transmission
Throttle Valve Position Elements
Central Magnet, camshaft adjustment

Glow/ignition systems

Ignition Coils
Switch Unit, Ignition System
Glow Time Relay
Control Unit, Glow Time

Fuel System

Fuel Pumps
Fuel Feed Unit
Fuel Pump Relay

Universal Electric Parts

Main Current Relay
Crimp Connector
Relay Socket
Time Relay
Diode
Plug Distributor
Fuse Holder
Switch
Fuse
Polarity Reversing Relay
Voltage Transformer

Drive/Chassis

Wheel Speed Sensors
Warning Contact, Brake Pad Wear
ABS Overtorque Protection Relay
RPM-Sensor, Automatic Transmission
Longitudinal-/Lateral Acceleration Sensors
Level Control – Air Suspension



Spare Parts Specialist since 1906



CORE RANGE / COMPLEMENTARY RANGE

~ 6.300 part numbers on TecDoc

Spare Parts Starter/Generator

Alternator Freewheel Clutch

Brush Holders

Carbon Brushes

Regulator

Rectifier

Ball Bearing/Needle Bearing

Solenoid Switch

Sintered Bushes

Slip Rings

Instruments

Sensor, RPM

Sensor, Speed

Warning Light

Comfort systems

Sensor, Parking Distance Control

Audible Reverse Warning System

Battery Management

Control Unit, Battery Management

Battery Relay

Battery Cut-Off Relay

Battery Isolator Switch

Multifunctional Relay

Lighting/Signalling System

Flasher Unit

Ballast, Gas Discharge Lamp

Hazard Warning, Light Relay

Lights-On Reminder

Low Beam/High Beam Relay

Heating/Ventilation/Cooling

Resistor, Interior Blower

Regulator, Interior Blower

Relay, Interior Blower

Relay, Air Conditioning

Relay, Radiator Fan

Relay, Radiator Fan Overrun

Sensor, Coolant Temperature

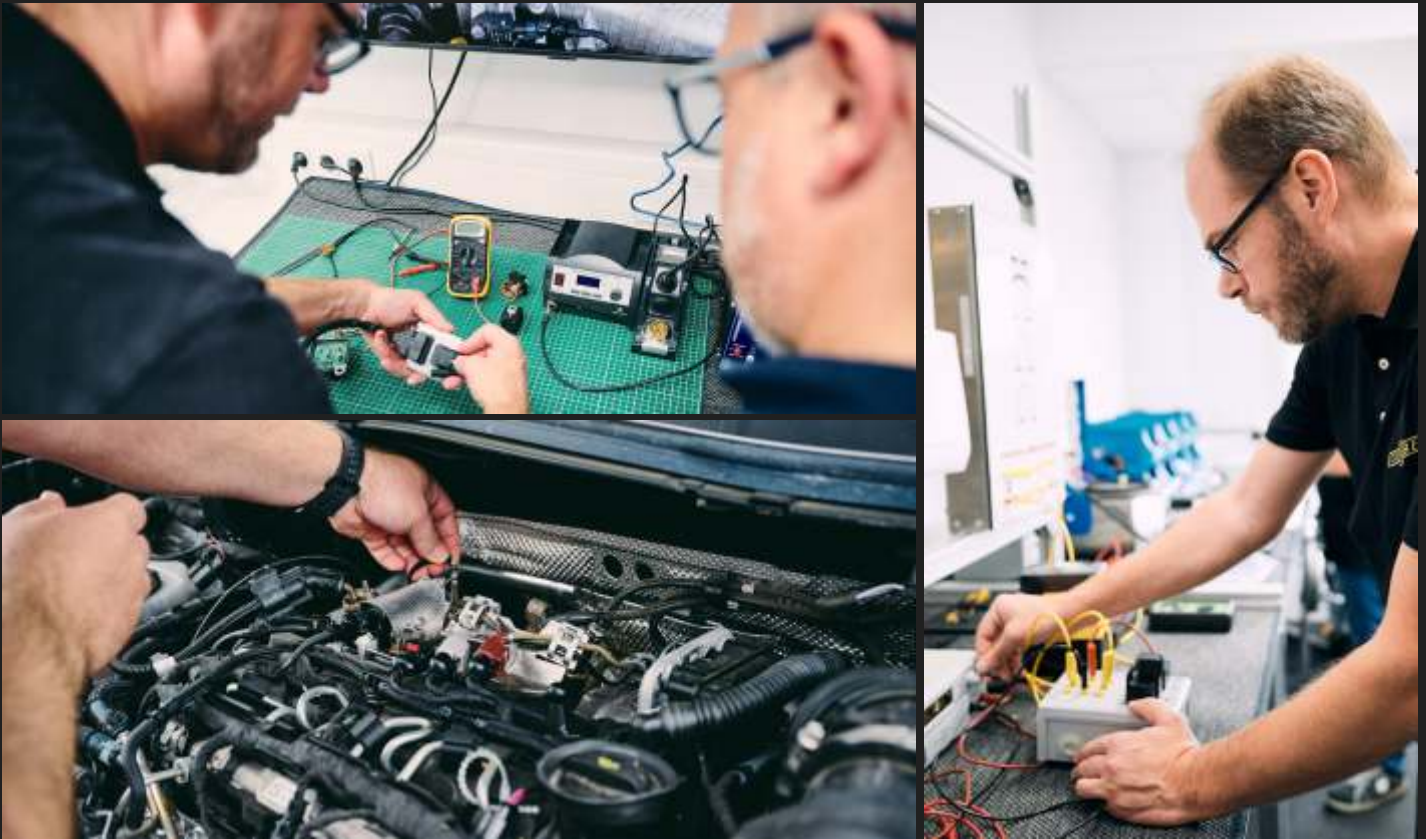


Spare Parts Specialist since 1906



QUALITY @ THE TEST BENCH

GEBE products' high-end technical designs compete directly with OEM products, while offering superior value. The entire production is IATF 16949 certified and regularly audited by our engineering team. Driven by customer requirements from various industries, the GEBE range is always cutting-edge with the latest aftermarket solutions.



GEBE TEST LAB & GEBE WORKSHOP - PARTNER TESTCENTERS

In our own test laboratory in Königswinter and the affiliated GEBE WORKSHOP-PARTNER TEST CENTERS, we are simulating the environmental influences, interactions in the exhaust system as well as extensive runtime testing. To guarantee the high quality and operational readiness of our GEBE products we are also continually improving our capabilities to map different software versions.

This network of experienced master mechanics and vehicle mechatronics provides our technical department and product management with indispensable practical feedback. This is another cornerstone to ensure that GEBE products perform well on the road.

In addition, we can continuously improve quality and service offerings, from damage analysis for better clarification to detailed function tests. With regular internal and external training courses, we ensure that our partners are well prepared for the constantly increasing requirements.



GEBE-SERVICE & TRAINING PROGRAMS

TRAIN THE TRAINER

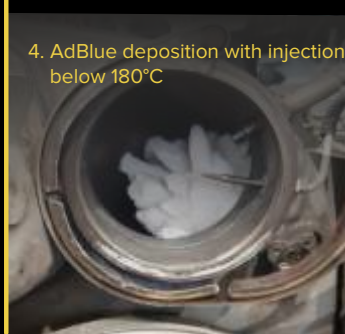
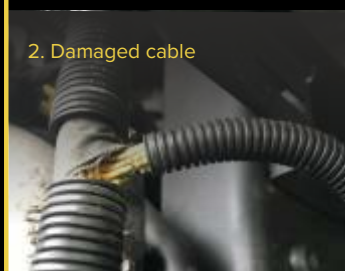
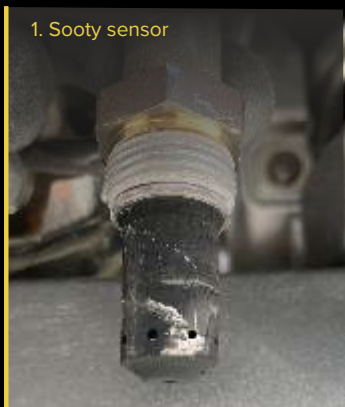
TECHNICAL TIPS & VIDEOS

F2F, DIGITAL & HYBRID



COMPACT KNOWLEDGE: e.g. the NOx-Sensor

Cause of failure



The worldwide tightening of exhaust gas limits for passenger cars and commercial vehicles required not only constant improvements in internal engine combustion, but also ever more efficient exhaust gas aftertreatment systems.

The so-called SCR system (selective catalytic reduction) is used in today's vehicles to minimize the high level of pollution caused by nitrogen oxides. The various types of nitrogen oxides (NOx) are minimized by using a chemical process.

The NOx sensor is responsible for controlling and monitoring this process. These sensors measure not only the NOx content in PPM (parts per million), but also the residual oxygen content in the exhaust gas for further emission control and injection processes.

This information is passed on to the NOx control unit in the form of voltage signals. This processes the respective signals and sends them to the SCR and engine control unit via the CAN bus (CAN drive).

When replacing the sensors, please note:

- 1. Check environmental factors and ensure proper function:**
Defective air mass meters or EGR valves can also impair the control function, as can leaky vacuum lines or exhaust systems.
- 2. Optical component inspection:**
The NOx-Sensors are more exposed to environmental influences, especially in exposed installation positions. These include stone chipping, corrosion or marten bites.
- 3. Always compare the correct part number on the component with the original number:**
Software adjustments to the vehicle or manufacturer-related adjustment measures have ensured that part numbers have been omitted or changed. In order to guarantee 100% assignment regardless of the vehicle code, the comparison is fundamentally necessary.
- 4. Calibration/adaptation:**
NOx-Sensors work on the principle of hysteresis. This means that in addition to the external influencing factors, your own measurement tolerance also plays a major role in the target/actual comparison, depending on the condition of the particle filter, among other things. Please refer to the manufacturer's repair instructions to determine whether the sensor needs to be adapted to ensure proper function.

Any commercially available model with OBD2 capability and the ability to calibrate components is suitable as a test device.



GEBE-SHOP

HIGHEST DATA QUALITY & AVAILABILITY



Part Number	Description	Unit	Price	Availability
97331A	SENS NOK SWK97331A	EA	100,00	IN STOCK
97331A	SENS NOK SWK97331A	EA	100,00	IN STOCK
97331A	SENS NOK SWK97331A	EA	100,00	IN STOCK
97331A	SENS NOK SWK97331A	EA	100,00	IN STOCK
97331A	SENS NOK SWK97331A	EA	100,00	IN STOCK
97331A	SENS NOK SWK97331A	EA	100,00	IN STOCK
97331A	SENS NOK SWK97331A	EA	100,00	IN STOCK
97331A	SENS NOK SWK97331A	EA	100,00	IN STOCK
97331A	SENS NOK SWK97331A	EA	100,00	IN STOCK
97331A	SENS NOK SWK97331A	EA	100,00	IN STOCK



www.gebe-shop.de



IKA Industrie- und Kraftfahrzeugausrüstung GmbH

Humboldtstraße 8
D-53639 Königswinter
www.ika-germany.de
sales@ika-germany.de
+49 (0) 2244 / 91842-0

Geschäftsführer: R.J. Schoenen |
H. Benninger | S. Hoff
Sitz der Gesellschaft: Königswinter
Amtsgericht: Siegburg HR B 2377
Ust-IdNr.: DE123373218



Spare Parts Specialist since 1906

